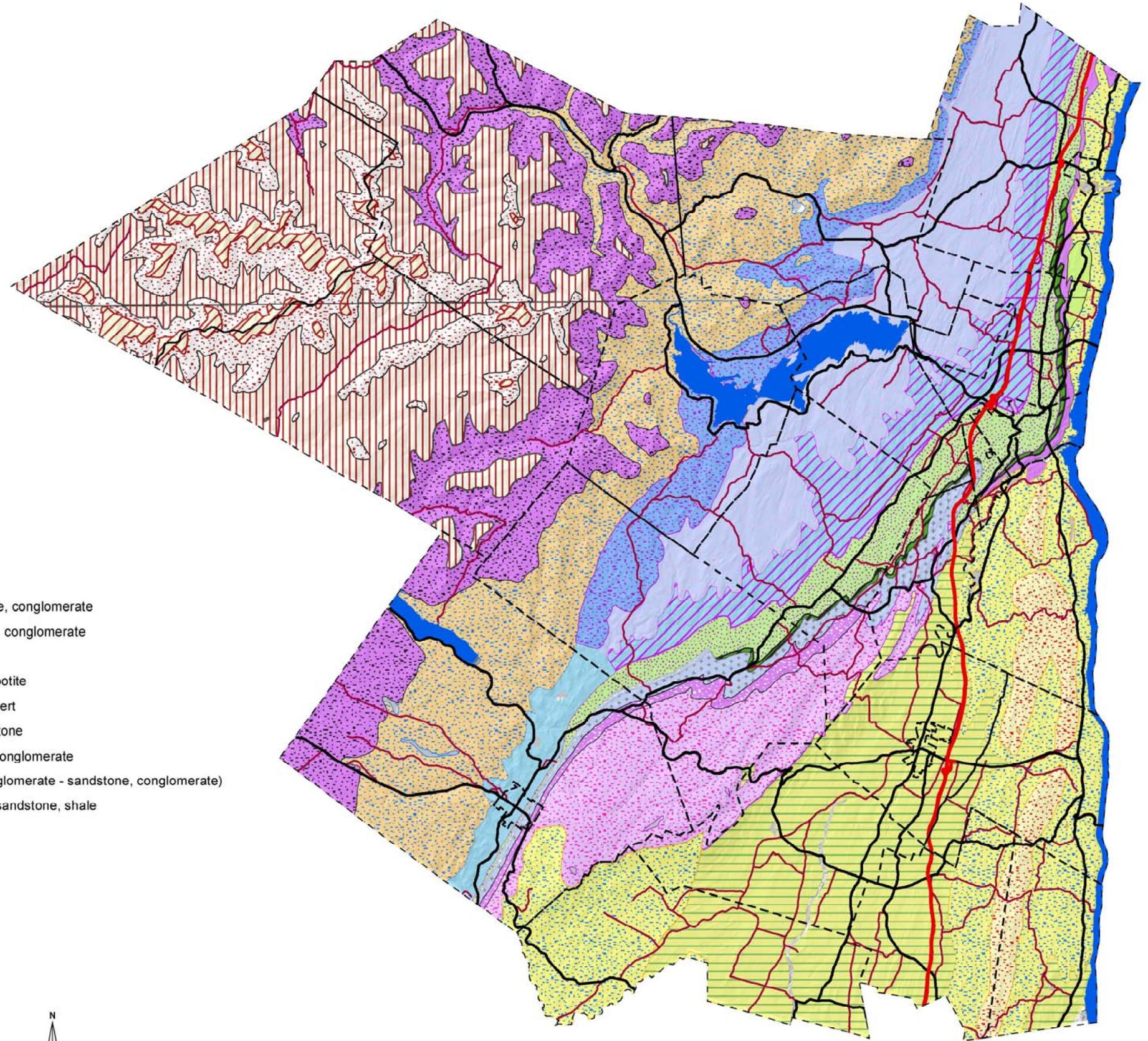


# Ulster County, New York Open Space Plan

## 4a. Bedrock Geology

### Data Sources:

Bedrock Geology downloaded from NYS Museum <http://www.nysm.nysed.gov/gis.htm>. Data corresponds to the "Statewide Bedrock Geology" map (NYS Geological Survey Map & Chart Series Number 15) published by the NYS Museum Publications Department. Map symbolization created by UC EMC and is based on the above mentioned map. Original map was published at a scale of 1:060,000 and was intended for small scale use.



### Legend

- Municipal Boundaries
- NYS Thruway
- State & US Highways
- County Routes
- Water Bodies

### Bedrock Geology

- |   |  |
|---|--|
| Port Ewen thru Manlius Limestone, Rondout Dolostone     | Honesdale Formation - shale, sandstone                                     |
| Glenerie Formation - limestone, chert                   | Slide Mountain Formation - shale, sandstone, conglomerate                  |
| Undifferentiated Hamilton Group - shale, sandstone      | Upper Walton Formation - shale, sandstone, conglomerate                    |
| Port Ewen Formation                                     | Austin Glen Formation - graywacke, shale                                   |
| Undifferentiated Lower Hamilton Group - shale sandstone | Manhattan Formation - pelitic shists, amphibotite                          |
| Plattekill Formation - shale, sandstone                 | Mount Merino Formation - shale, argillite, chert                           |
| Onondaga Limestone                                      | Normanskill Formation - shale, argillite, siltstone                        |
| Cashaqua Shale - shale, sandstone, conglomerate         | Quassaic Quartzite - quartzite, sandstone, conglomerate                    |
| Moscow Formation - shale, sandstone                     | Bloomsburg Formation - (Sahwangunk Conglomerate - sandstone, conglomerate) |
| Oneonta Formation - shale, sandstone                    | Rondout Formation - dolostone, limestone, sandstone, shale                 |
| Lower Walton Formation - shale, sandstone, conglomerate |  |



Ulster County Planning Board  
244 Fair Street  
PO Box 1800  
Kingston, NY 12401  
845-340-3340

Datum and Projection: NAD 27, UTM 18  
Map Date: June 2009



0 5 10 Miles

*This map is for informational purposes and was not prepared for legal, engineering, or surveying purposes. Users of this information should consult the primary data and information sources to ascertain the usability of the information.*