

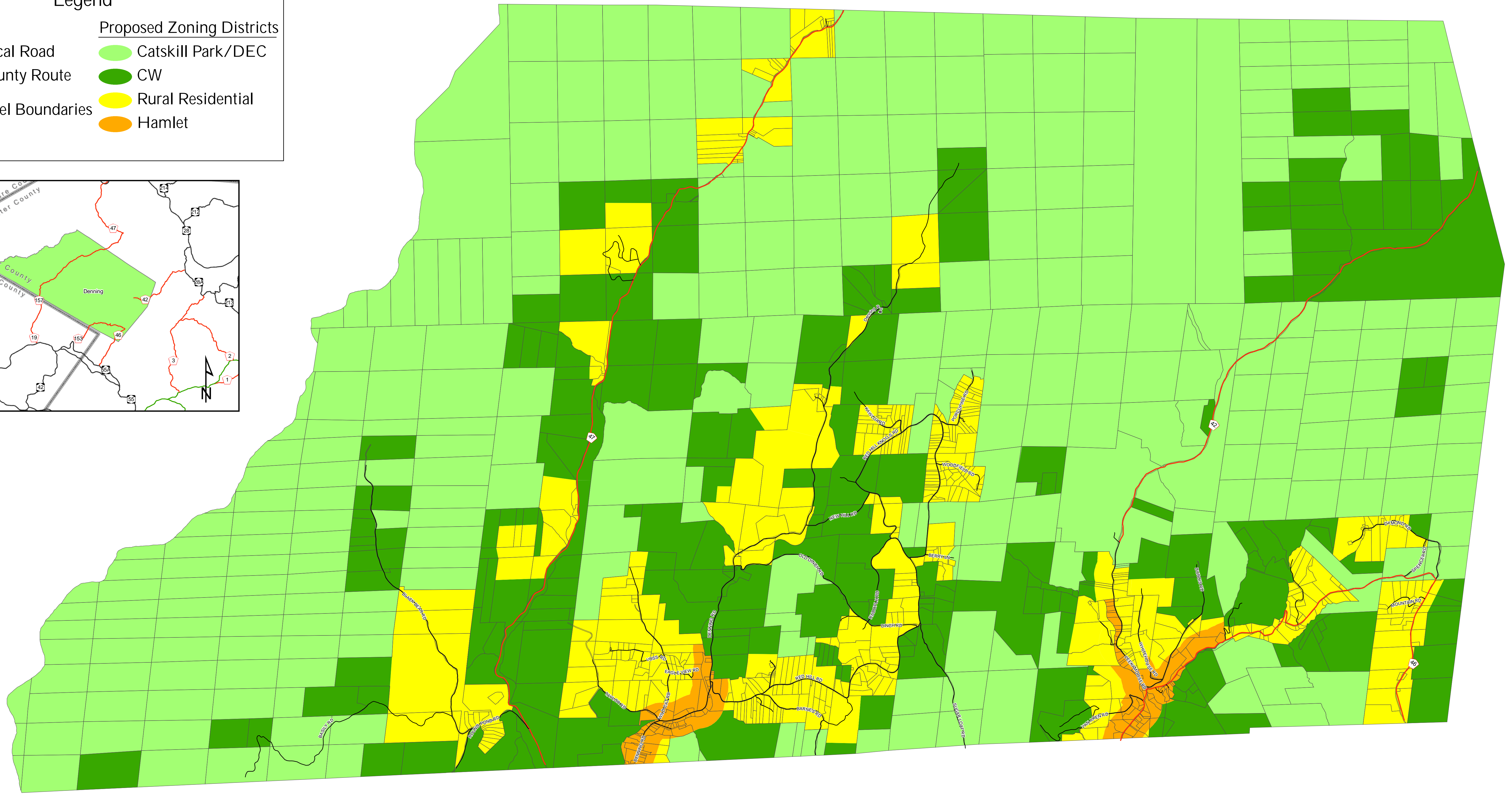
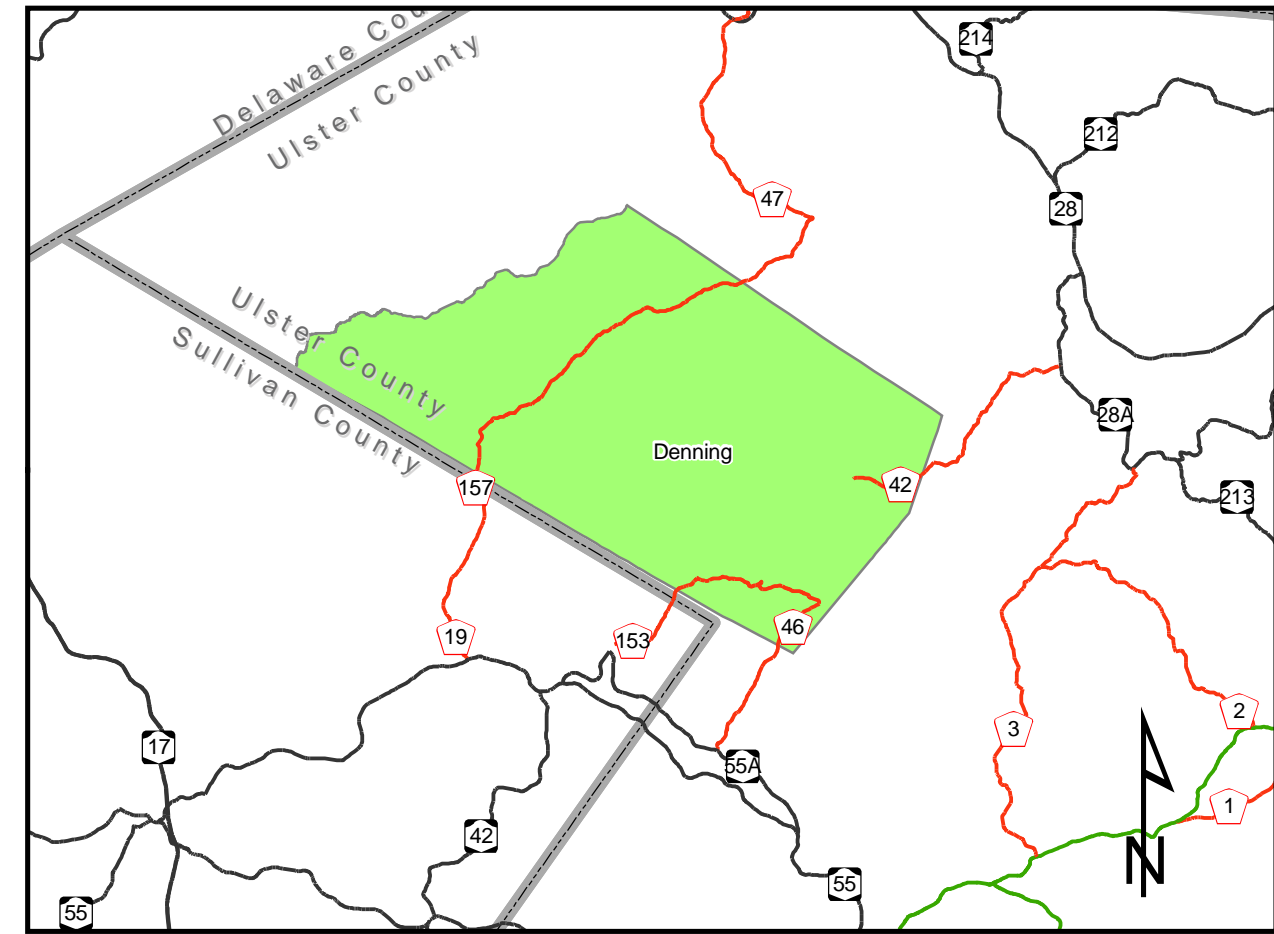
Legend

Roads

- Local Road
- County Route
- Parcel Boundaries

Proposed Zoning Districts

- Catskill Park/DEC
- CW
- Rural Residential
- Hamlet



Gilmour Planning LLC

map prepared by: **fountains spatial**

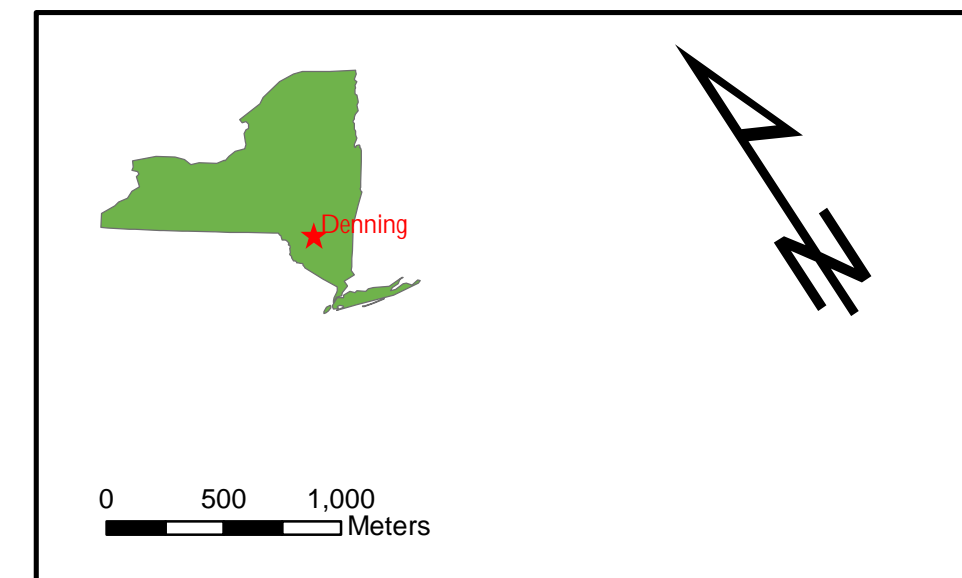
Notes and Data Sources

Notes:

1. This is a proposed zoning map for planning purposes only. This draft zoning map is not to be construed as an official zoning map.
2. The Town of Denning Comprehensive Plan project was funded in part from a grant from the New York State Department of State.

Data Sources:

1. The source data for the proposed zoning was a hardcopy map provided by Gilmour Planning LLC. The hardcopy map was based on committee meetings with the Town of Denning Planning Board held: June 30, 2006 and August 17, 2006. Further revisions were provided based on Planning Board meetings on September 14, 2006, February 8, 2007, April 12, 2007 and June 14, 2007
2. Parcel Boundaries were obtained from Ulster County and are Current as of June 2006.
3. Road data was obtained from the NYS State Dept. of Cyber Security and Critical Infrastructure Coordination, via Ulster County.



Town of Denning Comprehensive Plan
Proposed Zoning Map

October 2, 2007

Figure 1